



CROPPING CONCEPTS

FEEDING FARMER INNOVATIONS

JAN 20 - 22 2015

PNW OILSEED & DIRECT SEED CONFERENCE

THREE RIVERS CONVENTION CENTER
Kennewick, WA

css.wsu.edu/biofuels/

www.directseed.org/events



2nd Annual Collaborative Conference



Karen Sowers and Kay Meyer, co-program coordinators
Bill Pan and John McNabb, co-chairs

Organizing Committee Members

Core Committee

Kristy Borrelli - REACCH (UI, WSU, OSU)

Dan Harwood - Palouse Rock Lake CD

Ty Meyer - Spokane CD

Sheri Nolan - WA Oilseeds Comm

R. Dennis Roe - WSU

Don Wysocki - OSU

Advisory Committee

Mike Stubbs, Rick Jones, Tim Spratling - growers

Jim Davis, Kurt Schroeder, Doug Finkelnburg - UI

Shane Johnson - WA Oilseeds Comm

Winger, Marlon - USDA NRCS

Curtis Hennings, Jeff Schibel, Frank Young - consulting

CROPPING CONCEPTS

FEEDING FARMER INNOVATIONS
Major Sponsors



Lunch | Plenary | Lanyard Sponsors



Idaho Oilseed Commission

Keynote Speaker Sponsors



Coffee | Afternoon Refreshment Sponsors



Breakout Session Sponsors



Advertising Sponsors



EXHIBITORS

- Ag Enterprise Supply
- Ag Trucks & Equipment
- AgPro Manufacturing
- AgriTrend Consulting
- Agro Culture Liquid Fertilizer
- ATI Solutions LLC
- Barr-Tech
- BASF
- Bayer CropScience
- Black Rock AgriPrises
- Central Machinery Sales
- Crop Protection Services
- Croplan by Winfield
- Cross Slot
- Evergreen Implement (John Deere)
- Exactrix Global Systems
- FMC Corp
- North Pine Ag Equipment (Horsch)
- Idaho Oilseeds Commission
- Kile Machine & Mfg, Inc
- McGregor
- McKay Seed
- Monsanto BioAg
- Native Energy
- Northwest Farm Credit Services
- Odessa Trading Co/AgTech Services

PNW OILSEED & DIRECT SEED CONFERENCE

- Pacific Coast Canola
- Peripheral Vision
- Pillar Lasers Inc
- Pioneer West
- PNDSA
- RDO Equipment (John Deere)
- REACCH
- Royal Organics
- Rubisco Seeds
- The Scouler Co.
- Seed2Oil
- Skone Irrigation
- Spectrum Crop Development
- Spokane Conservation District
- Spray Center
- SS Equipment, New Holland
- St. John Hardware & Implement
- Star Specialty Seed
- Visit TriCities
- Washington Oilseeds Commission
- Western Ag Global
- Western Farmer Stockman
- Western States Equipment - CAT
- Wilbur Ellis
- WSU Extension/WOCS

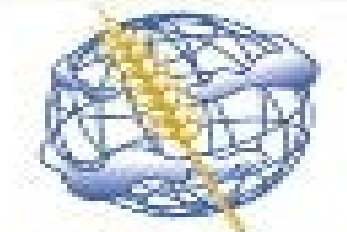


Inland PNW Research and Extension Partnerships

NOW



REACCH
Regional Approaches
to Climate Change -
PACIFIC NORTHWEST AGRICULTURE



CLIMATE
FRIENDLY FARMING™

Climate Friendly Farming

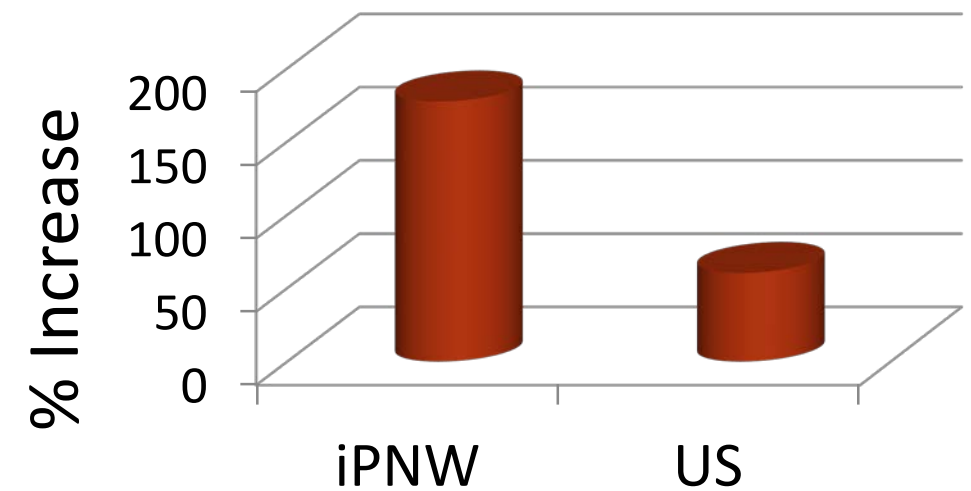
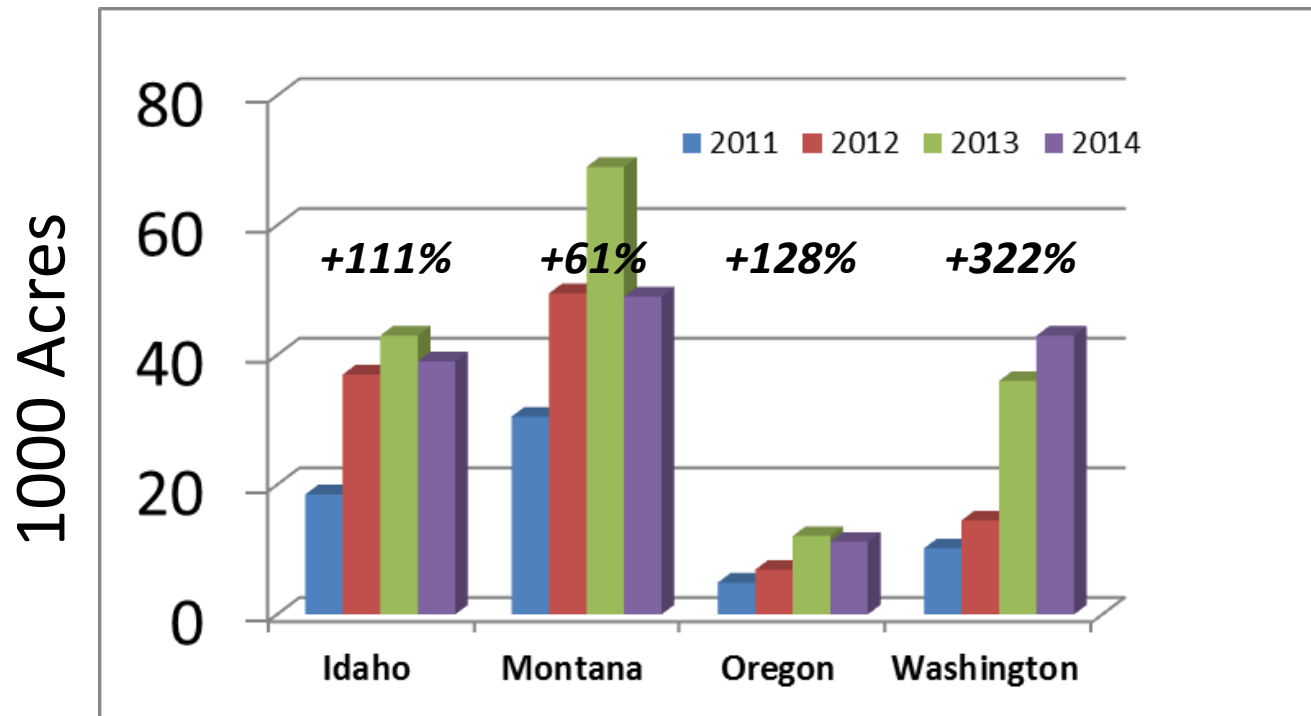


Columbia Plateau PM₁₀ Project

1970s

Regional and US Canola Acreage 2011-14

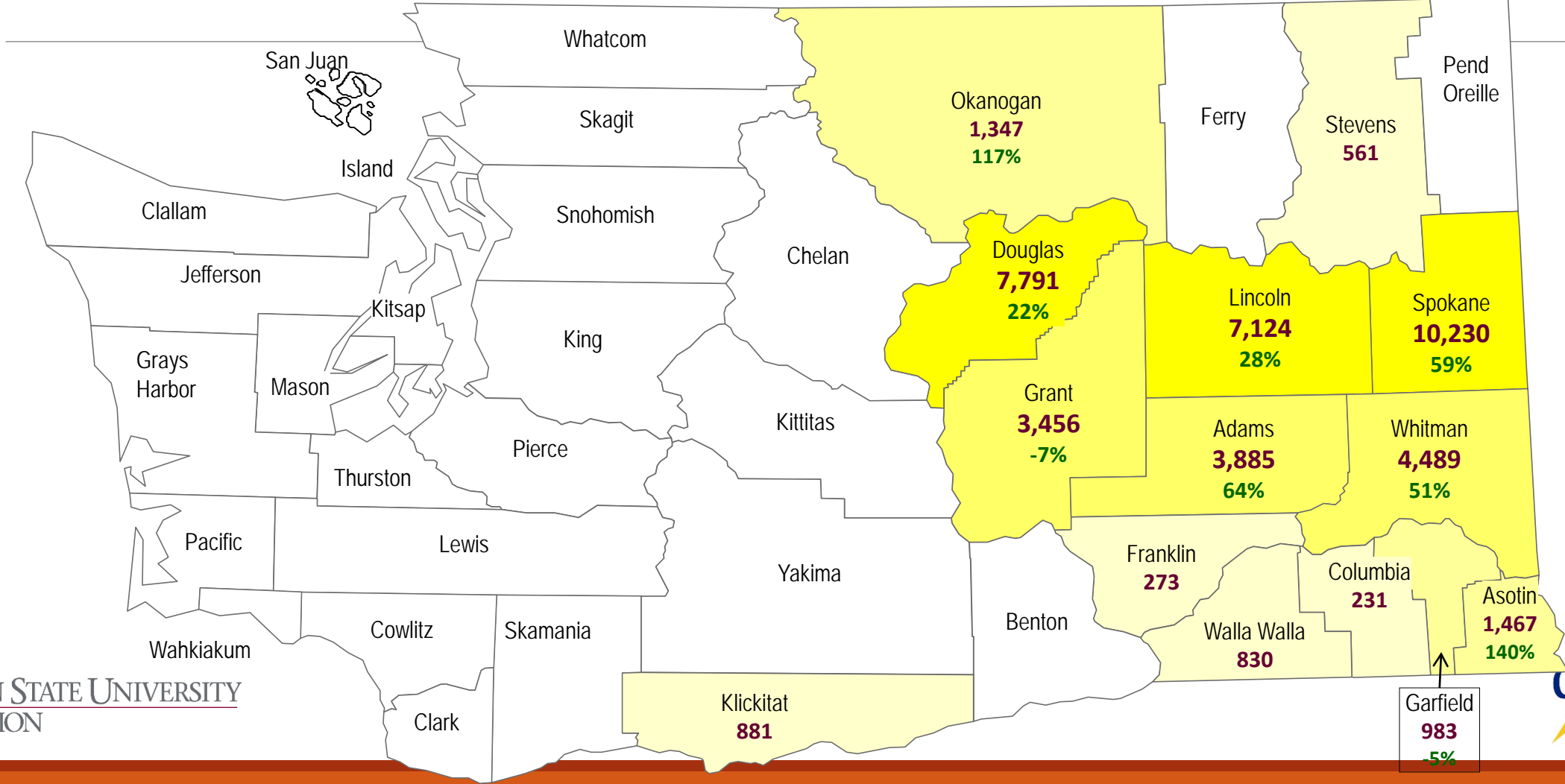
>140,000 PNW acres in 2014



Washington Canola Acreage, 2014

showing % change from 2013

Source: Acreage Reported to USDA's Farm Service Agency, as of 9/16/14
Prepared by Washington State Dept. of Agriculture
October 2014



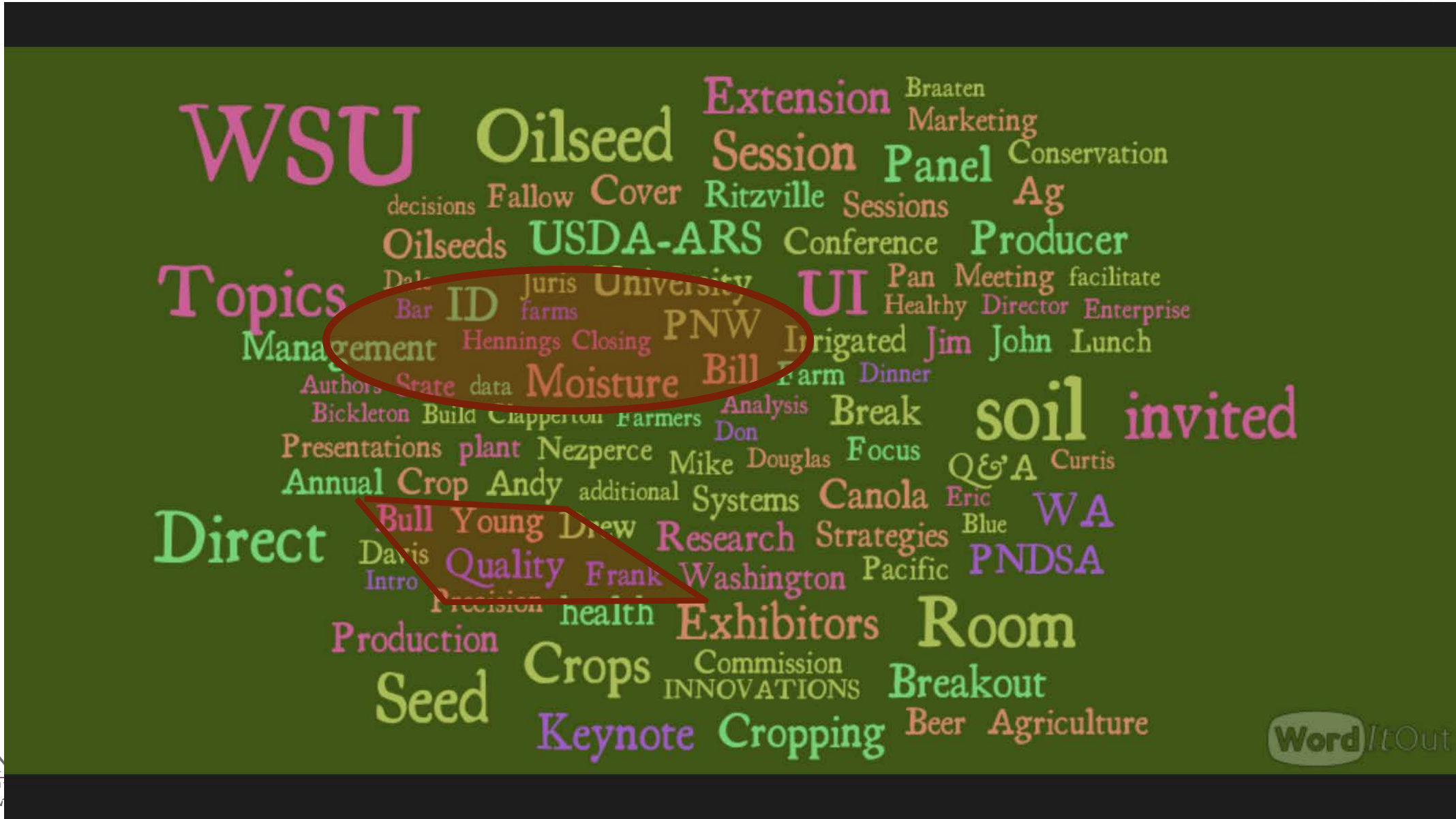
Direct Seed Acreage

- ❑ Recent estimates for inland PNW: ~50% DS acreage (1-2) passes
 - ❑ 40-85% by county reported by SWCDs (PNDSA)
- ❑ ~68% Small Grains Conservation Farming in U.S. (CTIC, 2008)

Cropping Systems: A Complex Equation

$$\text{Growers} \sum_{H^3=0}^{BF} \binom{n}{k} \mathbf{DS}^k (RT^l) + \text{Crop Rotation } C_{, OS, L, P, G, CC, F} H2O^{n-k} \text{Soil} =$$

$$(\text{Food} + \text{By Products} + \text{Soil} + \text{Environment} + \text{Community})^n$$



WordItOut

